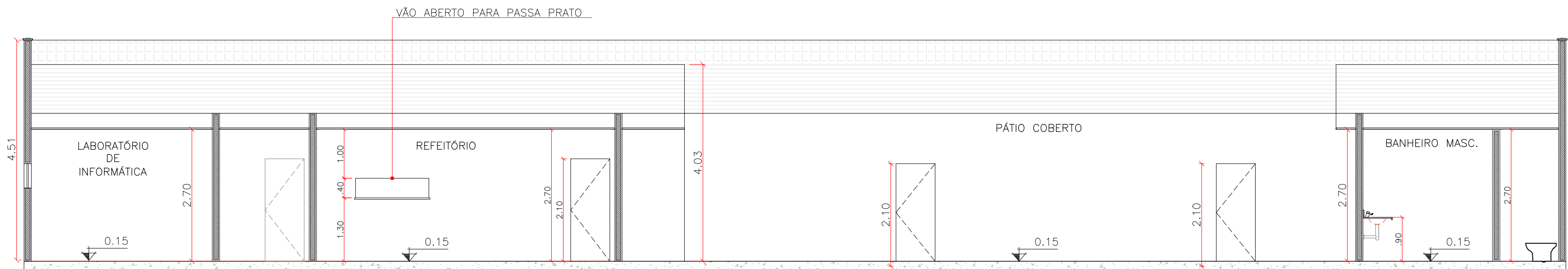
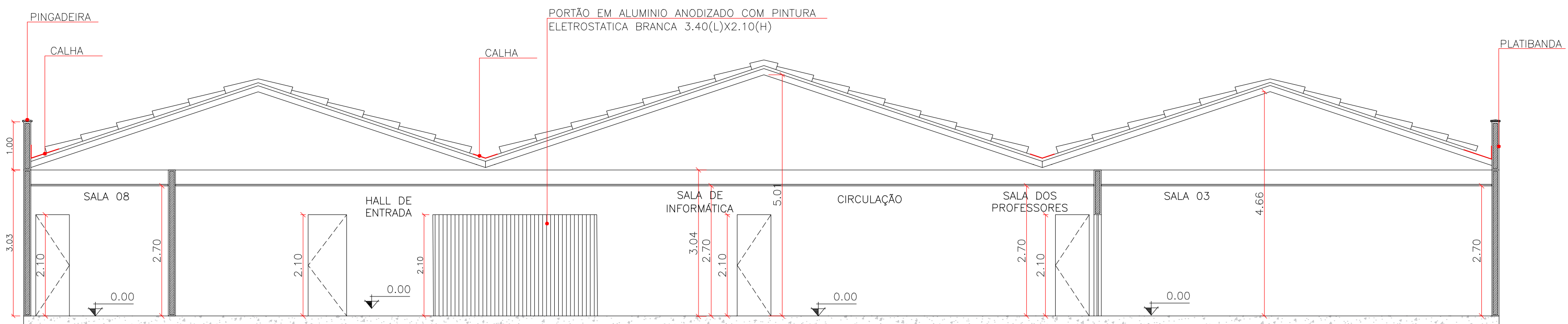


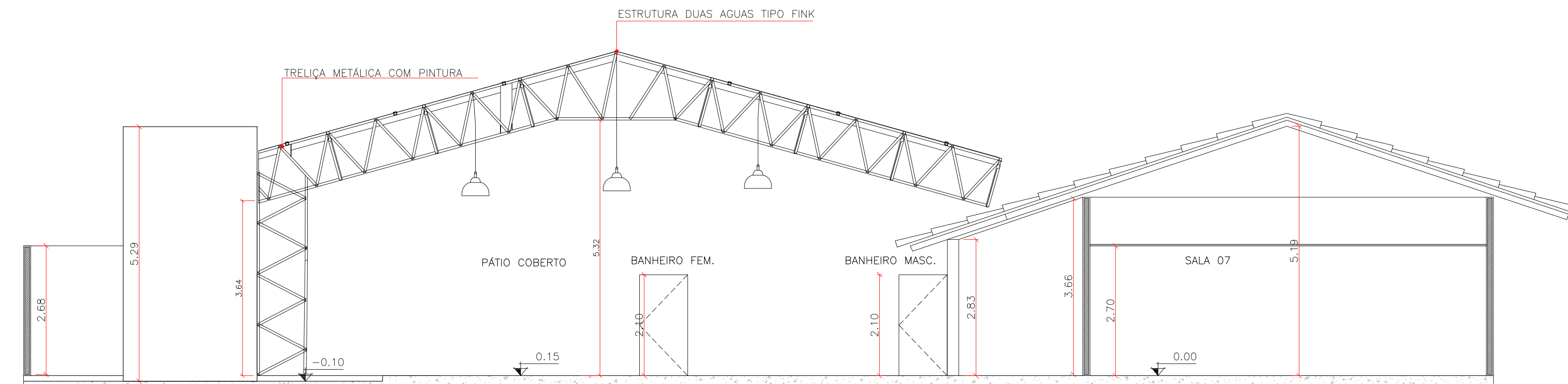
CENTRO EDUCACIONAL PENALVENSE - CORTE AA'
esc 1:100



CENTRO EDUCACIONAL PENALVENSE - CORTE BB'
esc 1:100



CENTRO EDUCACIONAL PENALVENSE - CORTE CC'
esc 1:100



CENTRO EDUCACIONAL PENALVENSE - CORTE DD'
esc 1:100

| | | | | | |
|---------|-------------------------------|--|--------------|---------------------------------|------------------|
| TEMA: | CENTRO EDUCACIONAL PENALVENSE | | SOLICITANTE: | PREFEITURA MUNICIPAL DE PENALVA | |
| TÍTULO: | CORTES AA, BB, CC E DD | | ESCALA: | 1:100 | FOLHA: 08/10 |
| AUTOR: | OLÍMPIO FERREIRA RAMOS JÚNIOR | | REV: | 00 | DATA: NOV 2021 |